



Rental
Leasing
Logistics

RECEIVED TOWN CLERK
GRAFTON, MA

2018 NOV 13 PM 12:58

AK

RECEIVED
NOV 13 2018
Zoning Board of Appeals

Johnny's Auto and Light Truck Repair

**277 Upton Road
Grafton, MA, 01519**

Penske Truck Rental
Auburn, MA, 01501

Proposed Plan

Our goal is to partner up with Johnny's Auto Repair. We are proposing to park 2-3 rental trucks on the property to be rented out. We will regulate the amount of vehicles on the lot by keeping daily counts of inventory levels. We will be designating a specific area on the lot where the trucks will be parked and will limit the size and types of vehicles parked on site.



Proposed Truck Sizes

- 12' Parcel Van
- 16' Parcel Van
- 26' Box Truck (Occasionally)



Proposed Hours of Operation

Monday: 8am to 5:30pm

Tuesday: 8am to 5:30pm

Wednesday: 8am to 5:30pm

Thursday: 8am to 5:30pm

Friday: 8am to 5:30pm

Saturday: 8am to 12pm



Proposed Parking Area



Top Left: This is where we would park the trucks

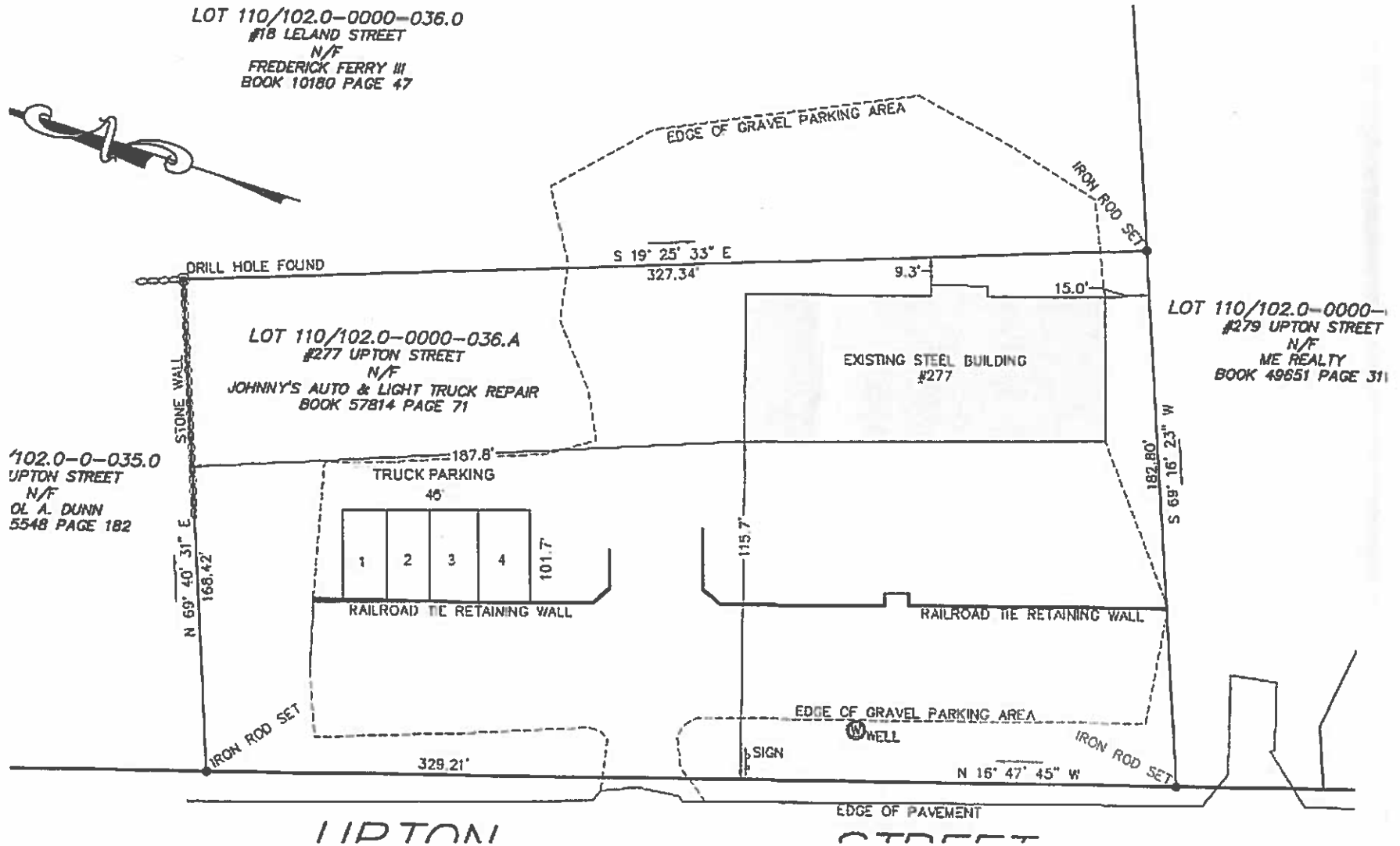
Top Right: Side view of parking area

Bottom Right: View of 140 from parking area

The trucks would be parked well off of RTE 140.



Plot Plan



Fleet Management

- The Penske location in Auburn will control the flow of trucks at this location.
- We will be monitoring their fleet size to make sure there is not an excess of equipment sitting at the location for any given time.
- There will be no maintenance done on any Penske owned truck at this location.



Rental | Leasing | Logistics